

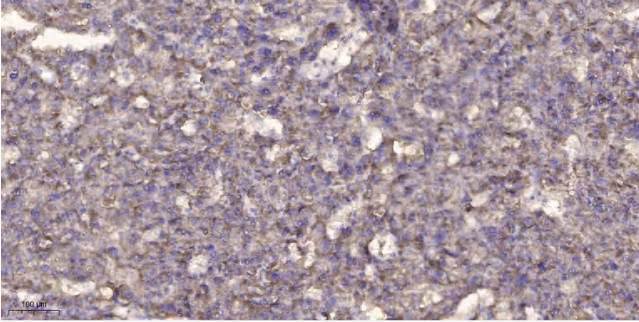


ITGA8 (heavy chain, Cleaved-Arg906) rabbit pAb

Catalog No	YP-Ab-04384
Isotype	IgG
Reactivity	Human;Mouse;Rat
Applications	WB;IHC
Gene Name	ITGA8
Protein Name	ITGA8 (heavy chain, Cleaved-Arg906)
Immunogen	Synthesized peptide derived from human ITGA8 (heavy chain, Cleaved-Arg906)
Specificity	This antibody detects endogenous levels of Human,Mouse,Rat ITGA8 (heavy chain, Cleaved-Arg906, protein was cleaved amino acid sequence between 906-907)
Formulation	Liquid in PBS containing 50% glycerol, 0.5% BSA and 0.02% sodium azide.
Source	Polyclonal, Rabbit,IgG
Purification	The antibody was affinity-purified from rabbit serum by affinity-chromatography using specific immunogen.
Dilution	WB 1:500-2000;IHC-p 1:50-300
Concentration	1 mg/ml
Purity	≥90%
Storage Stability	-20°C/1 year
Synonyms	Integrin alpha-8 [Cleaved into: Integrin alpha-8 heavy chain; Integrin alpha-8 light chain]
Observed Band	95 115kD
Cell Pathway	Membrane ; Single-pass type I membrane protein . Cell membrane .
Tissue Specificity	Expressed in mesenchymal cells, including alveolar myofibroblasts, kidney mesangial cells and hepatic stellar cells and vascular and visceral smooth muscle (at protein level).
Function	
Background	
matters needing attention	Avoid repeated freezing and thawing!
Usage suggestions	This product can be used in immunological reaction related experiments. For more information, please consult technical personnel.



Products Images



Immunohistochemical analysis of paraffin-embedded human liver cancer. 1, Antibody was diluted at 1:200(4° overnight). 2, Tris-EDTA,pH9.0 was used for antigen retrieval. 3,Secondary antibody was diluted at 1:200(room temperature, 45min).